



MRB | *group*

TOWN OF PHELPS HIGHWAY FACILITY



TOWN OF PHELPS HIGHWAY FACILITY

PHELPS, NY

In need of a new Highway Garage Facility, the Town of Phelps sought MRB Group to replace an existing 70 year-old Highway Garage that was undersized, outdated, and partly damaged from a past fire. The new facility was programmed and developed to meet current and projected future needs. MRB Group was retained to provide architectural, site design (including site plan studies) and structural engineering services.

Through collaboration with the Committee, and Town and Highway representatives, the facility was planned as a new 14,000 s.f. structure incorporating 10 garage bays, a repair bay, offices, break room, locker room, storage areas and mezzanine. The building was designed as a pre-engineered structure with a masonry block base. The new facility includes:

- Full building fire prevention sprinkler system
- Garage bays that are at least two vehicles in depth
- Drive-thru capability, which promotes efficiency and safety
- Radiant floor heat system
- Mechanics bay with space for a vehicle lift and a three ton hoist crane.

PROJECT DETAILS

Contact: Maggie Nearing, A.I.A.

Completion Date: Completed in 2016

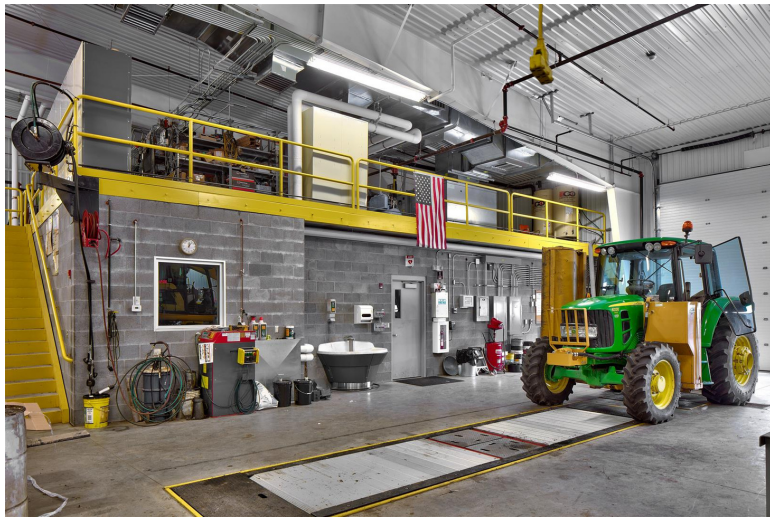
Project Role: Architecture, Engineering,
Site Development



14,000

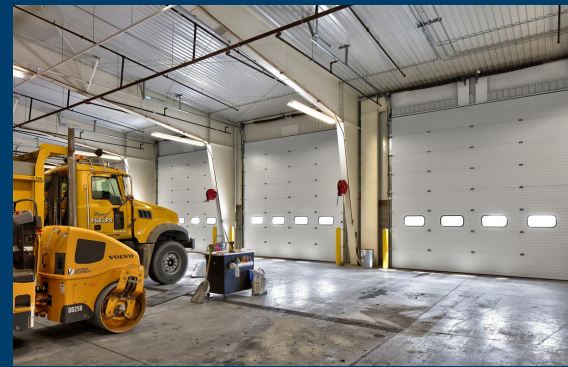
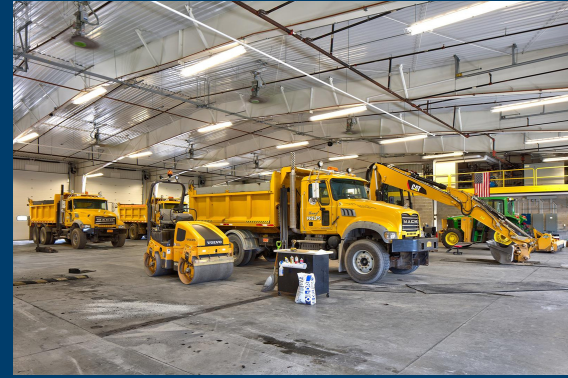
Square Feet

The in-house coordination between MRB Group's architectural, structural and site departments was invaluable. This was proven to be most evident in that MRB Group's construction estimate was within 1.5% of the awarded bid.



About MRB Group

MRB Group is an engineering, architecture and planning firm that specializes in municipal support. The firm currently assists more than 150 cities, towns, villages, and counties with design and operational support for public works functions, architecture for rehabilitation of public facilities, and asset management to preserve and maintain critical community infrastructure, like water and wastewater systems. MRB Group also provides long term strategic planning, development reviews and planning board support, as well as economic development services in an effort to strengthen and support local governments and their leadership.



MRB | *group*